





# Action Packed New Zealand!!

2,59,999/-



Jan, Feb, Mar, Oct,  
Nov, Dec

## Day 1: Arrival in Auckland

Today arrive in Auckland, based around 2 large harbours, is a major city in the north of New Zealand's North Island. In the centre, the iconic Sky Tower has views of Viaduct Harbour, which is full of superyachts and lined with bars and cafes. Auckland Domain, the city's oldest park, is based around an extinct volcano and

home to the formal Wintergardens. Near Downtown, Mission Bay Beach has a seaside promenade.

Post Immigration, get yourself transferred to your hotel, check in and relax.



Later in the afternoon, get ready to get a combination of experiences at Sky City Auckland which is a World class entertainment complex & casino in the heart of *Auckland's* CBD. Enjoy 20 bars & restaurants, 2 hotels, a casino, a theatre & the iconic Sky Tower.

For time out, take a moment to enjoy the breathtaking 360 degree views right across Auckland from the 328m tall Sky Tower or if it is adrenaline that you are seeking – take a walk around the top of the famous pergola or Sky Jump off!

## **Day 2: Auckland - Whitianga (2h 30m drive approx.)**

Post breakfast check out and head towards Whitianga, a town on the Coromandel Peninsula. Arrive in Whitianga, post your check in we will be heading towards to enjoy the amazing experience of Cathedral Cove Kayak Tour and later on relax



yourself at the amazing Hot Water Beach.

## **Explore this amazing coastline in the best possible way; up close and personal in a modern sea kayak...**

**We invite you to join us and experience the magic of sea kayaking in this amazing place!**

Our trips explore spectacular volcanic coastline and are designed for all levels and abilities. We use modern kayaking equipment and our qualified guides will give you full instruction and assistance. No experience necessary.



## **Hot Water Beach, The Coromandel**

Within two hours either side of low tide visitors flock to the usually deserted Hot Water Beach to find hot water bubbling through the golden sand. Families, kids and couples can be seen digging their own spa pool in the sand and relaxing in the natural springs. Often rated as one of the world's most renowned beaches – this is

one experience that should be on your bucket list. A truly unique Kiwi experience that every New Zealander should experience at least once in their lifetime! The beach also boasts some great surf, cruisy cafés and art galleries and is only a 5 minute drive to another Coromandel 'must do' – Cathedral Cove.



## **Day 3: Whitianga - Rotorua via. Waimarino Adventure Park (3h 30m drive approx.)**

Today after breakfast, check out and drive down towards Rotorua, a town set on its namesake lake on New Zealand's North Island, is renowned for its geothermal activity and Maori culture. In Te Puia's Whakarewarewa Valley, there are bubbling mud pools and the 30m-tall Pohutu Geyser, which erupts many times daily. It's also home to a living Maori village and the New Zealand Maori Arts and Crafts Institute, with traditional wood carving and weaving schools.

Enroute visit to Waimarino Adventure Park. Waimarino Adventure Park is a tranquil paradise situated on the banks of the Wairoa River just 10 minutes from Tauranga city. Our water and adventure park is focused around the sport of kayaking.

Waimarino has been Tauranga's premier kayaking & recreational destination since 1975.

## **Waimarino Adventure Park Activities & Facilities Include**

- Water Trampoline
- Climbing Wall
- Italian Pedalos
- The BLOB
- NZ's only Kayak Slide
- Tarzan Swing
- Gladiator Pole
- Diving Boards
- Swimming
- Recreational Kayaks
- Canoes
- Slip 'n' Slide
- Warm Thermal Pool
- Low Ropes Course
- Beach Volleyball
- Trampoline
- Picnic Tables & Chairs
- BBQ's
- Toilets & Changing Facilities
- Ice creams & drinks
- & Much More

Later arrive in Rotorua, check in and relax. In the evening enjoy the amazing experience at Redwood Nightlights Treewalk.

Redwoods Nightlights™ is one of New Zealand's top design led tourism experiences that features 30 exquisite lanterns designed by world-renowned designer and sustainability champion David Trubridge. Floating between 9-20 meters above the forest floor, this award-winning, eco-tourism walk is 700 meters long, spans across 28 suspension bridges and 27 platforms and takes about 40 minutes to complete.





## **Day 4: The Adventure at Off-Road NZ - OGO Zorbing - Te Po Evening Experience**

Post breakfast, today your day is going to be jam packed and fun filled as well. You are going to experience 3 different activities. Your morning will start with an adventure at the Off-Road NZ, afternoon will be fun filled with OGO Zorbing experience and in the evening you will get a chance to feel some cultural experience at Te Po Evening Experience.

### **A World of Adventures at Off Road NZ**

Off Road NZ is a sustainable premium adventure experience, creating fun memories, personal growth and lasting impressions. Established in 1992, Off Road NZ provide the best self-drive, off road vehicle experiences in New Zealand, including [4WD Bush Safaris](#) and [Monster 4X4 Thrill Rides](#). The newest adventure is the opportunity to race one of our 390cc 4-stroke karts on New Zealand's newest and longest KartSport circuit.



## OGO Zorbing

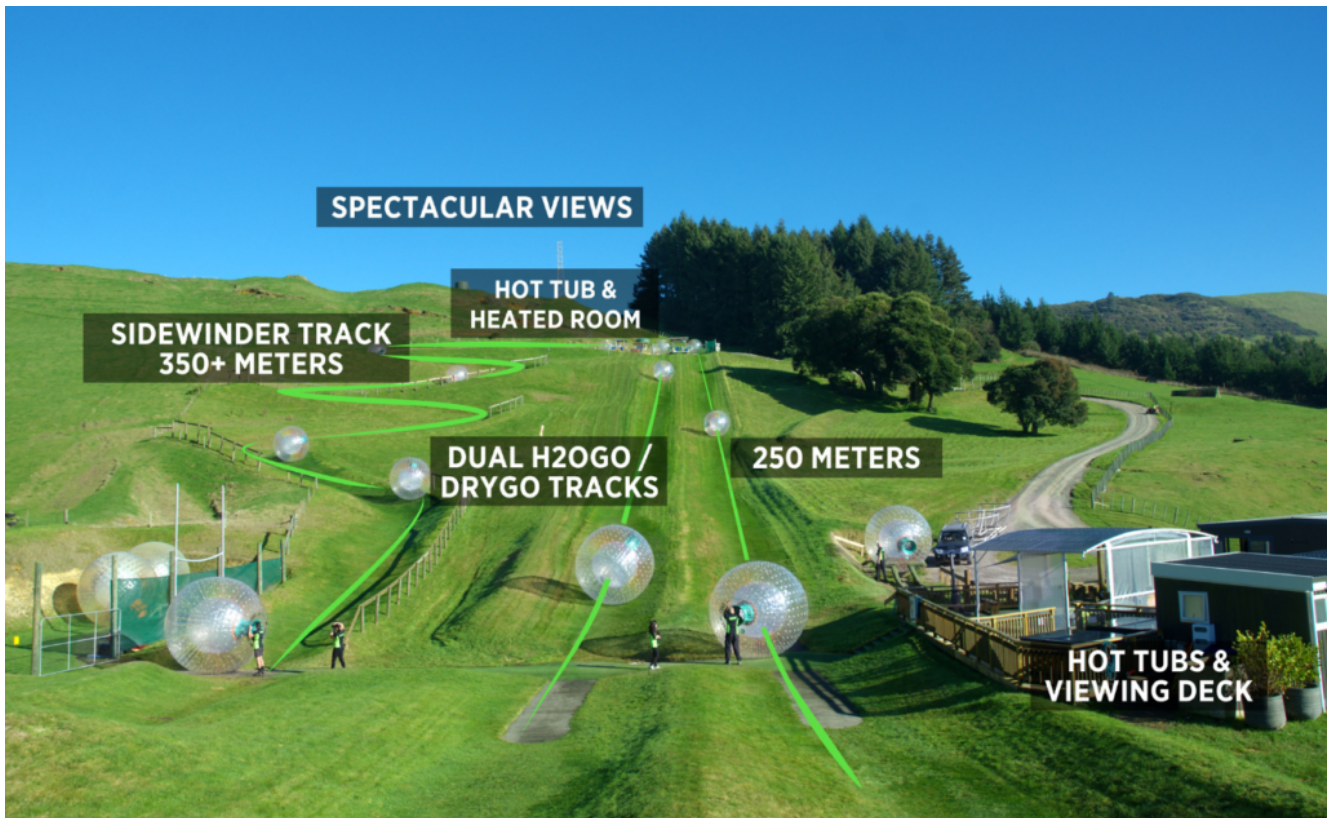
Superman dive into a giant inflatable ball and roll down Mt Ngongotaha with ZORB, where the fun will have you laughing uncontrollably.

Discover FOUR different ball rolling tracks – the world's longest zig-zag Sidewinder Track, the smooth 'n' fast double Straight Track, MEGA Track -the longest, fastest and steepest track in all the land, and the newest track; Big Air, our latest thrill ride. Ride with water or without water, the choice is yours!

The experience of rolling down a hill inside a giant inflatable ball has been an iconic adventure experience since Andrew and David Akers invented and developed the first ever ZORB site in the world back in 1997 at this very location!

To this day, Rotorua is the ONLY location in New Zealand where you can experience this amazingly fun and bizarre bucket list activity.





## Te Po Evening Experience

Enjoy a mouthwatering banquet of authentic Māori cuisine (kai) and marvel at the breathtaking beauty of our geothermal valley under lights. Includes a traditional welcoming ceremony (pōwhiri) and intimate concert performance.



## Day 5: Velocity Valley Adventure Park -

# Kaituna Grade 5 Rafting - Polynesian Spa

Today will also be a thrilling day like yesterday with a full day activities. In the morning we will be enjoying at the amazing Velocity Valley Adventure Park, in the afternoon experience the amazing Grade 5 rafting and later in the evening relax yourself at the Polynesian Spa.

## Velocity Valley Adventure Park - Where Speed, Adrenaline and Fear collide.

*Your Rotorua adventure starts here! At Velocity Valley, there's something for everyone - from 5 to 105, from novice to seasoned pro. Pedal, free fall, launch, propel, swoop or splash - we make fast fun for everyone!*



## Kaitune Grade-5 Rafting

The River Rats Kaituna Waterfall Experience will see you paddling through the pristine heart of the best rafting region in New Zealand - Okere, Rotorua. This



spectacular 2.0 – 2.5 hour experience provides all the gear you need, initial training and around 50mins on the water. Enjoy a thrilling mix of dropping down three waterfalls, pushing through 14 rushing rapids and paddling through calm waters of recovery where you can look back in awe at what you have achieved.

The Kaituna Waterfall Experience is suitable for many ages and stages from nature lovers to adventurous first timers (13 years and over) and total thrill seekers. Soak up the calm peacefulness of the lush native bush surrounding the Kaituna River and realise what 100% Pure New Zealand really means. You will appreciate the warmer waters of the North Island as the water splashes over the raft while you take on the rapids with your expert guide.

The area is steeped in Māori history and you will learn about the history and caves where the women and children were hidden and then later used as the burial ground for Chief Tutea – hence the naming of the mighty waterfall the Tutea Falls.



## **Polynesian Spa Rotorua**

Immerse yourself in New Zealand's original geothermal bathing experience.

Polynesian Spa is New Zealand's original and iconic geothermal bathing



experience, with exclusive access to both acidic and alkaline natural mineral springs, and unique spa therapies for the ultimate in rest and relaxation.

Polynesian Spa's geothermal hot mineral waters are sourced from two natural springs and feed into 28 hot mineral pools. The slightly acidic Priest Spring waters relieve tired muscles, aches and pains while the alkaline waters of the Rachel Spring nourish the skin.



## **Day 6: Rotorua - Tongariro National Park (1h 44m drive approx.)**

Today post breakfast, check out and head towards Tongariro National Park.

Tongariro is New Zealand's oldest national park and a dual World Heritage area. This status recognises the park's important Maori cultural and spiritual associations as well as its outstanding volcanic features.

The park has 3 active volcanoes: Tongariro, Ngauruhoe (Mount Doom in "The Lord of the Rings" films) and Ruapehu with its ski slopes. The Tongariro Alpine Crossing trail passes the Emerald Lakes and boiling mud pools, culminating at still-active Red Crater. Park wildlife includes the brown kiwi and the whio, or blue duck. Tongariro River has rapids and trout.

Arrive at your hotel, check in and relax. Later enjoy all the activities which the park is offering as per your choice



## **Day 7: Tongariro National Park - Wellington via. Lake Taupo (4h drive approx.)**

Post breakfast, check out and head towards Wellington and enroute visit the beautiful Lake Taupo.

Lake Taupo is a lake in the North Island of New Zealand. It is in the caldera of the Taupo Volcano. With a surface area of 616 square kilometres, it is the largest lake by surface area in New Zealand, and the second largest freshwater lake by surface area in geopolitical Oceania after Lake Murray in Papua New Guinea.





## **Day 8: Wellington - Picton (Ferry) - Nelson (Car) - Marlborough Wine Tour**

Today post breakfast, check out and head towards Wellington port, drop your self drive vehicle and take an onward ferry towards Picton. Upon arrival in Picton, pick up your self drive vehicle and head towards Nelson which is going to be a drive of 1h 50m.

If you are a Wine lover then stretch yourself a little and drive to Marlborough Wine Tour which will increase your drive by 1h 30m approx.

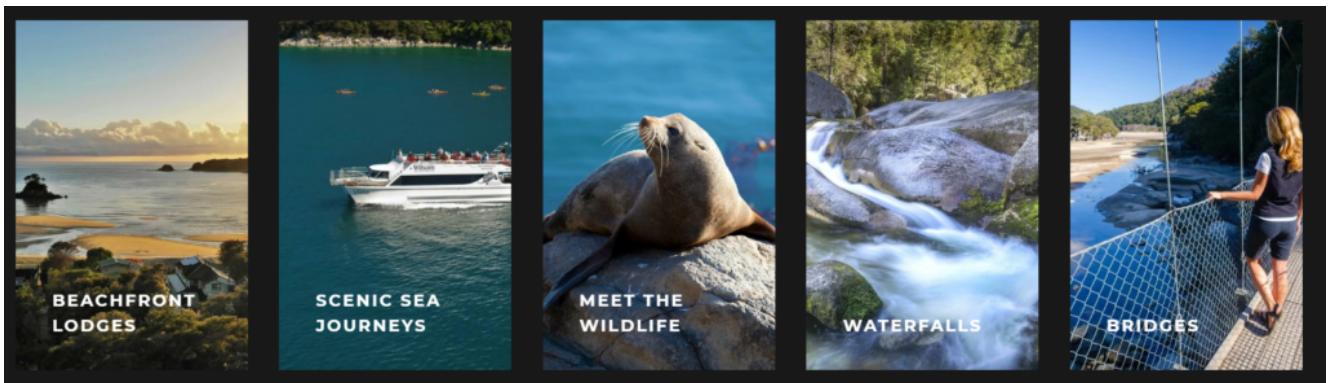




## Day 9: Full day at Abel Tasman National Park (1h drive approx.)

Post breakfast, it is time to enjoy your full day at the amazing Abel Tasman National Park.

Abel Tasman National Park is a wilderness reserve at the north end of New Zealand's South Island. It's known for the Abel Tasman Coast Track, a long trail winding over beaches and across ridges between Marahau in the south and Wainui in the north. The headland at Separation Point is home to New Zealand fur seal colonies. Little blue penguins, bottlenose dolphins and seals inhabit the Tonga Island Marine Reserve.



# **Day 10: Nelson - Punakaiki - Paparoa National Park (3h 40m drive approx.)**

After breakfast, check out and drive down towards Punakaiki, a small community on the West Coast of the South Island of New Zealand, between Westport and Greymouth. The community lies on the edge of the Paparoa National Park. The Pancake Rocks are a very popular tourist destination at Dolomite Point south of the main village.

Arrive at your hotel, check in and relax. Later enjoy a visit to Paparoa National Park.

## **Paparoa National Park**

Discover amazing pancake rocks, lush native forests, delicate cave formations and limestone canyons – all in one beautifully diverse national park.

Limestone underlies most of the park, and is responsible for the area's impressive landforms. Sculptured mountain ridges, mysterious river canyons, delicate cave decorations and the bizarre, pancake-like coastal formations will keep your camera busy. Maori travellers knew Punakaiki as a place for feasting (Punakaiki means 'a spring of food').

The park is the overlapping point between subtropical and cool climate trees. Nikau palms, northern rata and cabbage trees give the lowland rainforest a lush, Pacific feeling. Further up, silver beech forest merges with sub alpine shrubs. Higher still, daisies and gentians provide colour among the alpine tussocks. Some plants are unique to the area, suggesting that it was a botanic refuge during the ice ages.

Birdlife is prolific in the Paparoa National Park. The endemic Westland Black Petrel breeds only on the Punakaiki coast, and the Great Spotted Kiwi combs the forest by night.



## **Day 11: Punakaiki - Franz Josef via. On Yer Biking Adventure and Greymouth (2h 52m drive approx.)**

Post breakfast, check out and head towards Franz Josef via. exploring Greymouth and experiencing the adventure of On Yer Biking.

**The most fun on four wheels in New Zealand since 1997!**





## Day 12: A Neve Discover Flight – Fox Glacier Hot Pools

Today it is time to get ready for the thrilling Helicopter Ride and later on relax yourself at Glacier Hot Pools.

### A Neve Discover Flight

Are you ready for an adventure? Get ready to lift off in the safe hands of you pilot, gazing over staggering ice formations and rugged South Island terrain. Then you'll touch down on the snowy glacial plains, inhale the mountain air and take snaps with your chopper before heading back to base.

The Fox and Franz Josef Glaciers are constantly moving. On this flight, which glacier we land on and where is dictated by daily movement of the ice formations and the weather patterns that these vast areas of ice impact.



## **Fox Glacier Hot Pools**

Nestled in lush rainforest, the Franz Josef Glacier Hot Pools are a haven of natural tranquility. Our pools are the perfect way to relax and unwind after travelling along Te Tai o Poutini (The West Coast).





## **Day 13: Franz Josef - Queenstown via. Haast and Lake Wanaka (5h drive approx.)**

Post breakfast, check out and head towards Queenstown via a visit to Haast and Lake Wanaka.

In Haast, you can have Heli Experience or River Safari.

### **Heli Experience - Take your adrenaline to wild new heights!**

Fly up and over the ice, and see pinnacles, crevasses, seracs, and the deep blue ice of NZ's South Island unique glaciers.

**It's peak viewing time!**



The stunning Haast World Heritage Area is one of New Zealand's top attractions and provides a once in a lifetime opportunity to experience stunning and incredible views of New Zealand's last frontier.

We specialise in scenic flights over this region's spectacular and varied scenery, including alpine areas, waterfalls, hidden lakes and the stunning West Coast of the South Island. Haast has a temperate climate so hunting is available all year round. We specialise in **hunting and fishing trips** and we customise every trip to meet your needs and offer guided trips.

## Haast River Safari

**Every New Zealand holiday should include a jet boating experience. Haast River Safari, located on the West Coast of New Zealand, offers jet boat tours in fully enclosed river boats. Great visibility is ensured, yet you remain warm, dry and comfortable, making this a unique and safe experience suitable for anyone of any age to participate in and enjoy.**

Haast River Safari operates river jet boat rides in the South Westland World Heritage area. Learn from our local and highly experienced jet boat driver/guides about the physical attributes of this remarkable glacial valley, where temperate rainforest thrives.

Hear stories of the Kiwi spirit that enabled the Haast community to survive on the edge of the wilderness. We'll stop so you can get out of the boat so that you can reflect on the fact you are in one of New Zealand's last frontiers.

Sunshine or rain our jet boat trips operate daily.

## Lake Wanaka

Located in the stunning alps of the South Island in New Zealand, visitors from around the world are drawn to the Wanaka region by its outstanding natural beauty. Wanaka's lakes and mountains and proximity to Mt Aspiring National Park, makes it the ultimate base for outdoor activities.

## Puzzling World Wanaka

For over forty-five years Puzzling World has been messing with people's heads no matter what age, nationality or experience. With a mix of bizarre buildings, rooms

of illusion and the world-famous Great Maze this attraction is designed to baffle your brain and challenge your perceptions of reality.

Even if you only pay a visit to the extensive Puzzle Centre or New Zealand's most unusual public toilets, your world will never be the same again...

## **Day 14: Skyline Gondola with Luge Ride - Shotover Jet Boat Ride**

Today post breakfast, it is time to experience the three most amazing rides of the day: Skyline Gondola, Luge Ride and the famous Shotover Jet Boat Ride.

### **Queenstown Gondola**

#### **A Must-Do Queenstown Activity!**

Take a scenic ride in the iconic Skyline Gondola and take in the stunning views as you ride the steepest cable car lift in the Southern Hemisphere!

You'll be carried 450 metres above Queenstown and Lake Wakatipu to the top of Bob's Peak, where you'll enjoy a spectacular 220-degree panorama with breathtaking views of Coronet Peak, The Remarkables, Walter and Cecil Peak and, of course, Queenstown.





## Queenstown Luge

**Take the driving seat with the gravity-fuelled Skyline Luge, the global thrill ride for all ages.**

Take a thrilling ride enjoyed by all ages and abilities. Our purpose-built Luge carts put you in complete control as you take on over 800 metres of banked corners, tunnels and dippers. Once you've conquered the course, hop on the chairlift and do it all again, and again, and again. Gentle and leisurely or steep and adventurous, you'll be hooked. Once is never enough!



## Queenstown Shotover Jet Boat Ride

The only way to experience our Canyons, see their beauty and feel their power, is to come on a journey with us, the world's most exciting jet boat ride. A unique combination of beauty and power, it's an experience like no other, blending pristine natural landscape with wall to wall canyon action from start to finish!



## **Day 15: Bungy Jumping - Arrowtown**

Today you are going to do the best thing you have ever done “Bungy Jump”. And later on while returning back, we will have some free time to explore Arrowtown and enjoy doing some shopping over there.

### **The Nevis Bungy Jump**

You can't drive to this one, but it's much more exciting to take our 4WD bus along the narrow gravel track anyway.

Go full throttle with our 134m Bungy (the highest in New Zealand). Free fall for 8.5 seconds in a blitz of pure fear and adrenaline. Don't say we didn't warn you, because this will definitely put the cement in your coffee.





## Day 16: A day tour to Milford Sound

Today morning, keep your self drive vehicle parked at your hotel and get ready for a coach tour (you can fly also) to Milford Sound. We don't recommend to drive because it will be too long and hectic ride for you!

A day tour to Milford Sound offers some of the most spectacular natural scenery to be viewed anywhere in the world. Travelling through Fiordland National Park, your coach-cruise-coach tour can start in Queenstown, but you can also book a Te Anau to Milford Sound day tour. Board your bus or coach and travel through stunning scenery along the Milford Road and into Fiordland, where your cruise boat awaits you. Milford Sound tours include a cruise around the fiord so you can experience its wonders up close and see landmarks like Mitre Peak and amazing wildlife such as dolphins and seals. Cruise the inmost reaches of Milford Sound to the open Tasman Sea and back.

During your tour, your driver guide will entertain you with information about the region. Many visitors say the commentary and friendly service from their driver guide is what makes the day truly special. The top Milford Sound tour companies

also offer extras like leather seats and free wifi to make your day more comfortable. Some also offer the option to convert your tour to a coach-cruise-fly tour.



## Day 17: Free for Leisure

Today is going to be a free day for you to decide which activity you would like to go for today. We would recommend you the following:

### **Sky Diving Queenstown:**

Queenstown is the birthplace of Tandem Skydiving in New Zealand, also known as the 'Adventure Capital of the World'. Queenstown in NZ's South Island is the premium place to 'Jump out of a perfectly good Aeroplane'! Our drop zone is located at the base of the famous Remarkables mountain range surrounded by a working sheep farm.

### **Canyon Swing:**

If someone told you to go jump off a cliff...would you do it? How about if we did? Trust us, you won't regret it - for freefall without equal this'll be a heart-pounding highlight of your life.



## **Walking and Hiking in Queenstown**

For lovers of walking and hiking, Queenstown is paradise. This stunning region offers a multitude of options for those who love exploring by foot.

Surrounded by The Remarkables mountain range and nestled on the shores of Lake Wakatipu, Queenstown's spectacular environment is best explored on foot. Many day walks leave from the centre of town, some as easy as a stroll along the lakefront and Queenstown Gardens, or as difficult as any backcountry track. Try the 3-hour Queenstown Hill Time walk, which leaves from Belfast Street and offers panoramic views at the top.

## **Skiing and Snowboarding**

Queenstown is nestled in the heart of the Southern Alps, boasting magnificent mountains for skiers and snowboarders of all levels. Choose from four ski areas, the closest just 20 minutes' drive from the town centre.

The enviously long ski season in Queenstown welcomes skiers and snowboarders from June to October. Our four ski areas offer unrivalled alpine scenery, world class infrastructure and varied open and treeless terrain, each ski field has its own unique character.

A wide range of terrain is available to suit all ability levels, beginners can enjoy a friendly atmosphere and lessons to quickly conquer the mountain. Expert skiers can explore advanced trails inbounds or venture into the backcountry in the ultimate Southern Alps expedition.

## **Day 18: Queenstown - Mt Cook (3h Drive approx.)**

Today post breakfast, check out and head towards Mt Cook which is a 3 hours drive. Arrive at your hotel, check in and relax. Later in the evening, spend some time at Lake Tekapo and then enjoy the wonderful Big Sky Stargazing.

## Lake Tekapo

Lake Tekapo is a small town located at the southern end of the lake of the same name in the inland South Island of New Zealand.

The township faces north across the remarkable turquoise coloured lake to the mountainous drama of the Southern Alps. Lake Tekapo gets its intense milky-turquoise colour from the fine rock-flour (ground by glaciers) which is suspended in the water.

## Big Sky Stargazing

The darkness of the night sky around Aoraki Mt Cook is unbeatable – its official! Let the team at Big Sky Stargazing introduce you to the wonders above. The 4367sq km Gold Status Aoraki Mackenzie International Dark Sky Reserve is the largest in the world and for this tour you will be the centre of it all.

Our experienced guides will introduce you to our beautiful southern night sky with a full hour using the naked eye, astro-binoculars and state of the art 14" and 11" astronomy telescopes. Unleash your imagination as you discover our neighbourhood in the universe including the southern cross, seasonal ecliptic objects, planets, planets, stunning star clusters, moons, distant galaxies and even our very own galaxy, the spectacular Milky Way.



An experience is guaranteed. The tour is delivered either from an outdoor viewing platform at our Stargazing building set alone under a massive night sky, or if the weather is unfavourable then your guide leads you through a 'live' orientation of our southern night sky indoors, reclined in comfortable seats of New Zealand's first

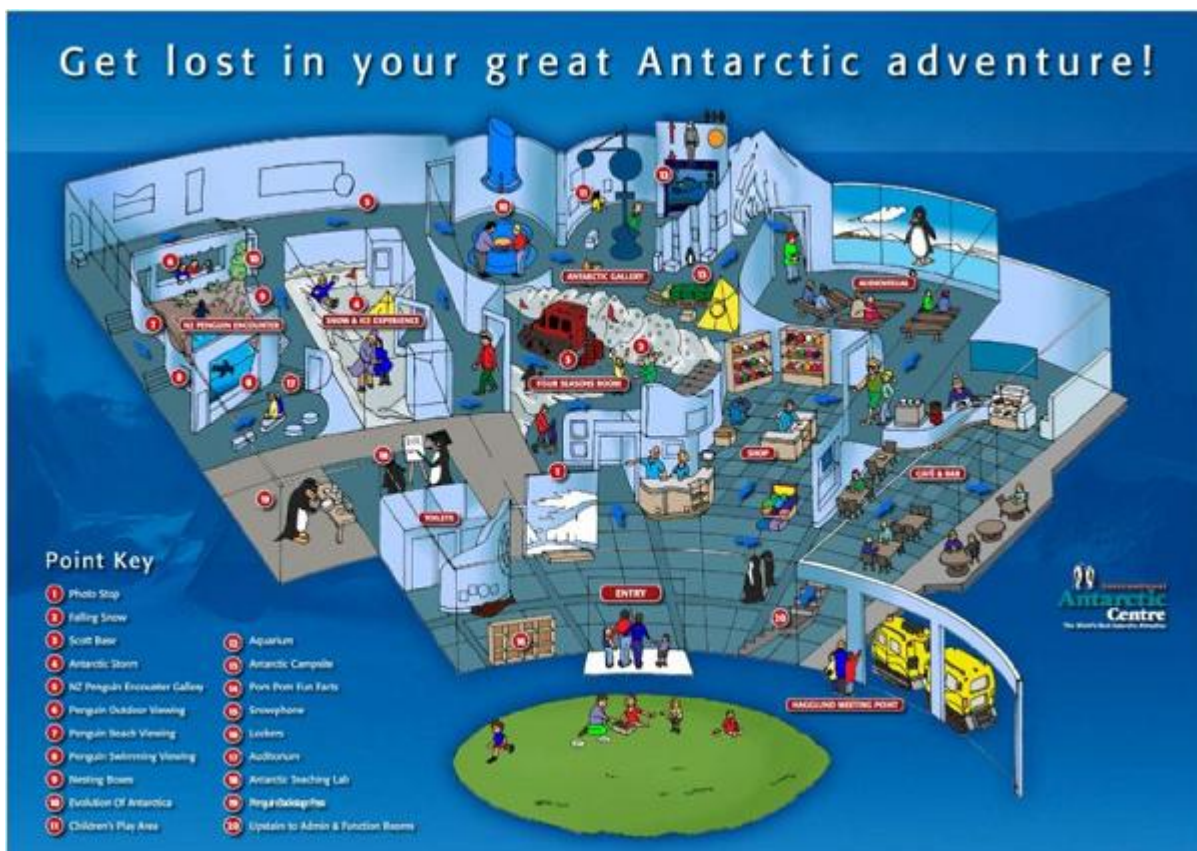
360 digital Dome Planetarium theatre where 4k high definition images generated by state of the art computer software immerse you in a stunning digital view of the universe and beyond.

Every night is a unique experience with stars, planets, the Moon and satellites constantly moving as our Earth orbits in space.

## Day 19: Mt Cook - Christchurch (4h drive approx.)

Today post breakfast, check out and move towards Christchurch which is going to be a 4h drive from Mt Cook. Arrive at your hotel, check in and relax. Later enjoy at International Antarctic Centre.

### International Antarctic Centre



Be chilled in our incredible Antarctic storm room. Be thrilled on an all-terrain vehicle tour. Make friends with penguins and huskies. Learn about the first



expeditions, modern day life on Scott Base and the future of humanity on the ice. Be amazed through the big screen ice tour and astonished within the immersive 4D theatre.

In just a few hours here the icy continent will create memories to last a lifetime. It's cold. It's cool. It's waiting to be discovered by you.

## Day 20: Departure

Post your final morning breakfast in Christchurch, check out and head towards Airport, drop your self drive vehicle and move ahead to take your flight back to home!

---

▪ **Included**



---

▪ **Not  
Included**

